

# EOS REBEL XS / 1000D

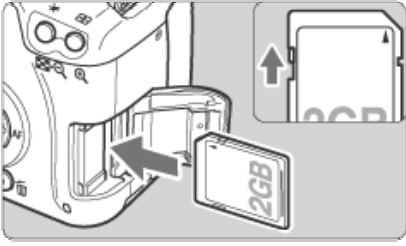
## Firmware Update Procedures

### Precaution

- A power failure during the firmware writing operation may disable the camera.
  - Use a fully charged Battery Pack or dedicated AC Adapter Kit (Optional) ACK-E5 for the firmware update.
  - Do not shut off the power during the firmware writing operation.
  - Do not open the card slot cover during the firmware writing operation.
- Do not press any camera buttons during the firmware writing operation.

## **Firmware Update Procedures**

- In the following instructions, x.x.x. indicates either the current firmware version or the firmware version for the update.



### **(1) Format the SD Card**

Be sure to carefully review the contents of the SD card before formatting.

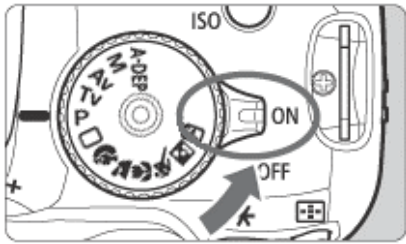
Insert the SD card into the camera, and turn the Power Switch <ON>.

Press the <MENU> button.

Press the Cross keys to select the [Format] item, and press the <SET> button.

Press the Cross keys to select the [OK], and press the <SET> button.

Turn the camera <OFF> and remove the SD card from the camera.



### **(2) Download the firmware update file from the Web page.**

Please download the compressed, self-extracting file that matches your computer's operating system.

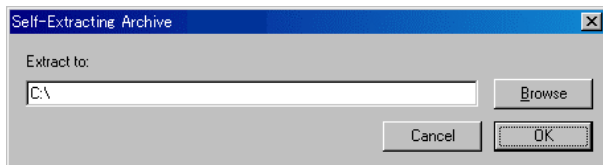
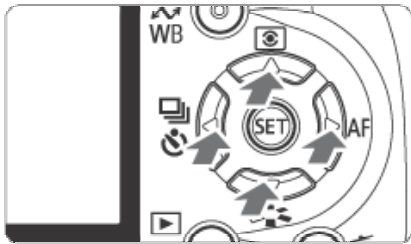
Extract the contents of the downloaded file to create the firmware update file. (\*1)

Confirm the file size of the firmware update file. (\*2)

If the file size differs, please download the file again from the Web site.

The name of the firmware update file is "e6kr5xxx.fir". ("xxx" will be different for each firmware version.)

The name and size of the firmware update file can be checked on the Web site.



(\*1)The way to extract the contents of the downloaded file.

#### Windows

Double-click the downloaded file.

Clicking [OK] will cause the file's contents to be extracted and the firmware update file to be created.

#### Macintosh

The downloaded file will automatically self-extract, creating the firmware update file.

In the case the downloaded file do not automatically self-extract, double-click the downloaded file.

(\*2)The way to confirm the file size.

#### Windows

Right-click the icon of the firmware update file and select the [Properties] command from the pop-up menu that appears.

#### Macintosh

Select the icon of the firmware update file, and then select the [Get Info] command from the [File] menu.

- In case of using the SD card reader, follow the procedure from Step (3-1) onward. In case of not using the SD card reader, follow the procedure from Step (4-1) onward.

### **(3-1) Copy the firmware update file to the SD card.**

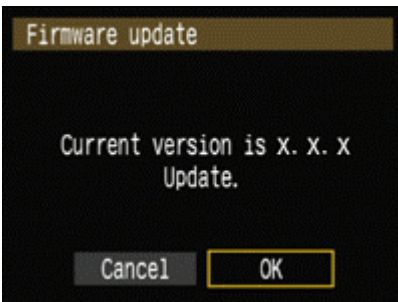
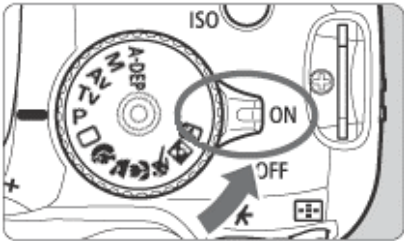
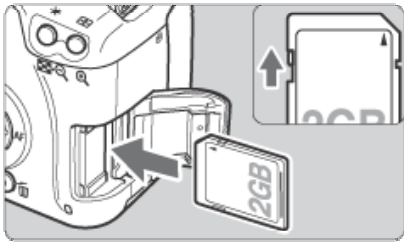
Insert a SD card that has been formatted in the Camera into the SD card reader.

Copy the firmware update file to the first window that appears when the SD card is opened (the root directory).

Remove the SD card from the card reader.

\*When removing the SD card, be sure to do so as described in the documentation for the computer or the card reader.

\*If the firmware update file is placed in subfolder of the SD card, the camera will not see it.



### **(3-2) Start the firmware update.**

Rotate the Mode Dial to select <P> mode (or one of the other modes in the creative zone).

Insert the SD card with the firmware into the camera.

Turn the Power Switch <ON>, and then press the <MENU> button to display the menu.

Press the Cross keys to select the "Firmware Ver.x.x.x" item at the bottom of the "Set-up 3 (Yellow)", and then press the <SET> button.

The firmware update screen will appear.

Press the Cross keys to select [OK], and then press the <SET> button.

Follow the procedure from Step (5) onward.

\*If the firmware update screen does not appear on LCD monitor, the firmware update file may not have been properly copied to the SD card, so please try again starting from step (1).

#### **(4-1) Connect the camera and the computer.**

Rotate the Mode Dial to select <P> mode (or one of the other modes in the creative zone).


Insert a SD card that has been formatted in the camera into the camera.

Connect the camera and the computer with the USB cable, and then set the camera's power switch to <ON>.

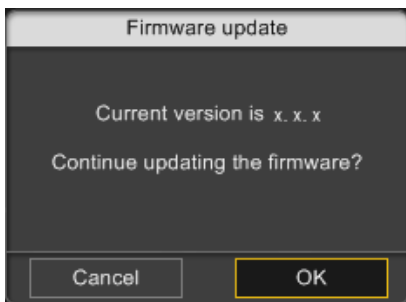
#### **(4-2) Start the firmware update.**

Start EOS Utility.

Click the [Camera settings / Remote shooting] button.

Click [  ].

Click the [Firmware Ver x.x.x].

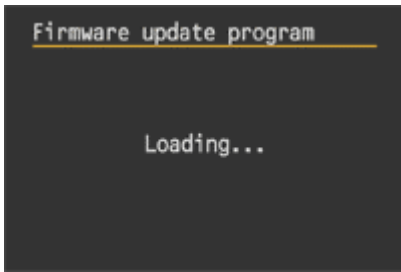


The firmware update screen will appear on the computer screen.

Click [OK].

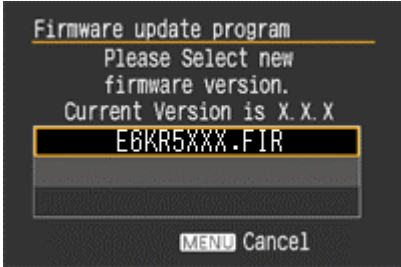
The firmware update file will be copied to the SD card by following the on-screen instructions to select it.

Follow the procedure from Step (5) onward on the camera.



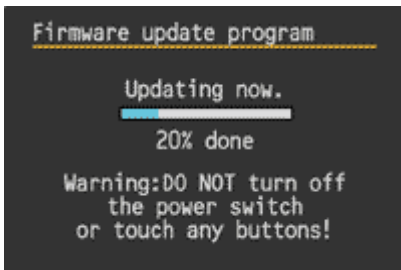
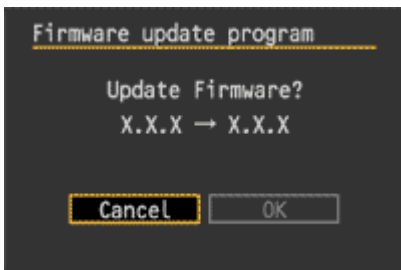
### **(5) Update the firmware.**

The message on the left will appear on the LCD monitor, and the camera will check the version of the firmware update file.

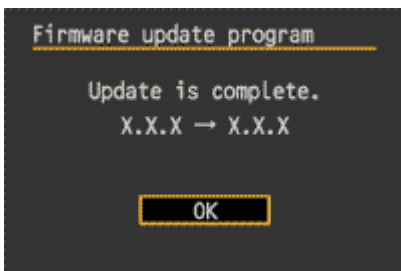


The screen shown on the left will appear on the camera's LCD monitor.

If you press the <SET> button, a confirmation screen will appear, so check the firmware update shown, press the Cross keys to select [OK], and press the <SET> button again to start the firmware update.



The message on the left will appear during the update.



### **(6) Complete the firmware update.**

When the update is completed, the message on the left will appear on the LCD.

Complete the firmware update by pressing the <SET> button.

The firmware update is now completed.

When the firmware update operations are finished, turn the camera <OFF> and remove battery from the camera for at least two seconds. This will cause the new firmware to take effect after the battery has been reloaded and the camera is turned on.

Format the SD card before using it again.

## Verifying the firmware Version

Turn the Power Switch <ON>, and press the <MENU> button. Press the Cross keys, and you will see the "Firmware Ver.X.X.X" at the end of the settings shown in "Set-up 3 (Yellow)", which is the currently installed firmware version number.



**Note:** Select <P> mode (or one of the other modes in the creative zone). The version of the firmware will not appear in the basic zone.

## If an ERROR message appears during the firmware update

In this screen appears, remove the battery and check to make sure that there are no problems with the battery capacity or with the firmware update file on the SD card.

If there are no problems, repeat the update operations again.

If the problem persists, please contact the Canon Service Center in your region.

